

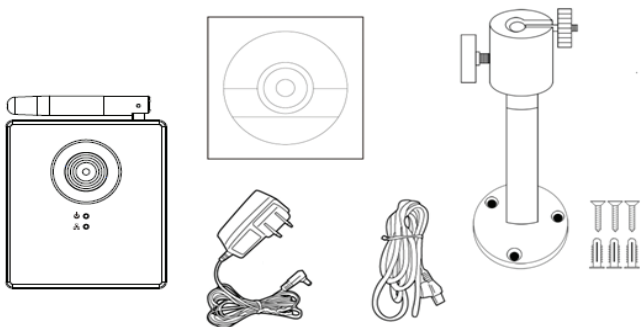


# **WIRELESS 11N HD IP CAMERA**



## **Quick Installation Guide DN-16026**

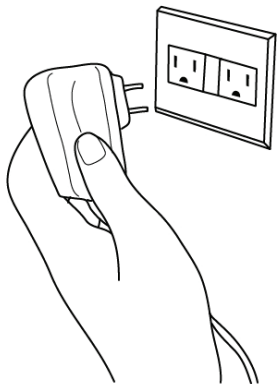
Thank you for purchasing this IP Camera! Before you can use this camera, please check the packaging contents. If any of them is missing, please contact your dealer of purchase for help.



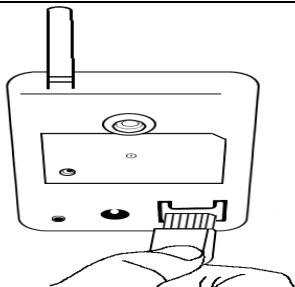
Item Name	Q'ty	Description
IP Camera	1	IP Camera
CD	1	Camera Windows Utility and Manual
Network Cable	1	Connects IP camera and your local area
AC power adapter	1	Provides electrical power to IP camera
Accessory Kit	1	Tripod Wall mount kit

# *IP Camera Installation*

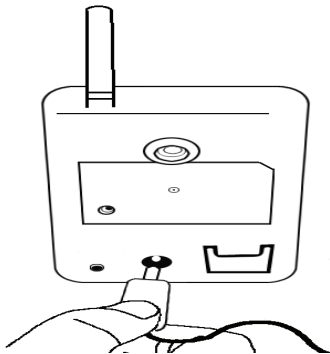
## *Step-by-Step*



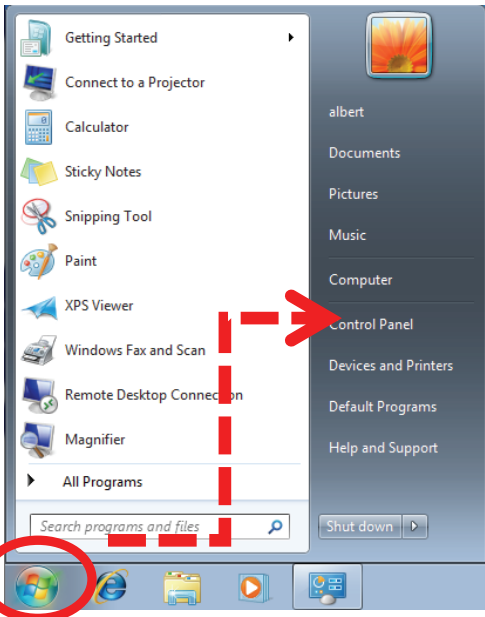
Plug the AC power adapter into the electrical outlet on the wall.



Connect the network cable to the network socket located at the back of IP camera.



Insert the other end of AC power adapter in the DC power socket located at the back of IP camera, and then connect the other end of network cable to one of network port of the switch / hub of your local area network.



For first-time configuration, you must set your computer's IP address to 192.168.2.1 so you can connect to IP camera.

Please click 'Start' button and then click 'Control Panel'.



## Network and Internet

View network status and tasks  
Choose homegroup and sharing options



Click 'View network status and tasks' under 'Network and Internet'



## Network and Sharing Center

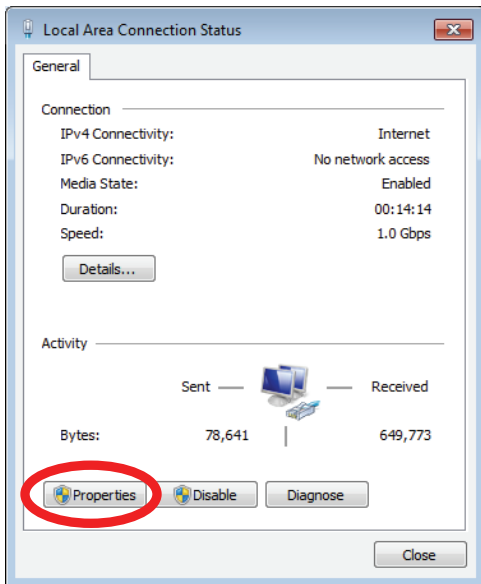
If you didn't see 'Network and Internet' in control panel, please look for 'Network and Sharing Center' icon and double-click it.

Access type: Internet

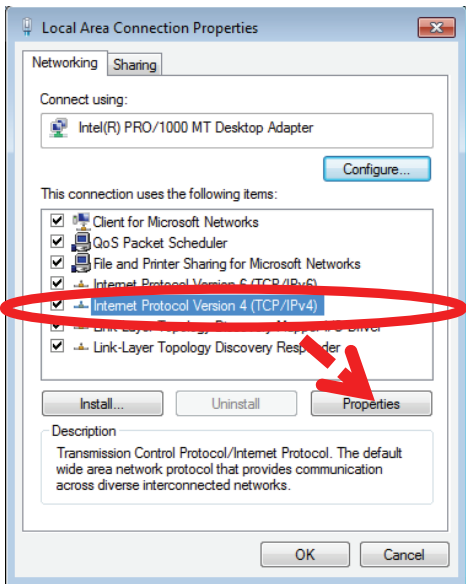
HomeGroup: Joined

Connections:  Local Area Connection 

Click 'Local Area Connection'

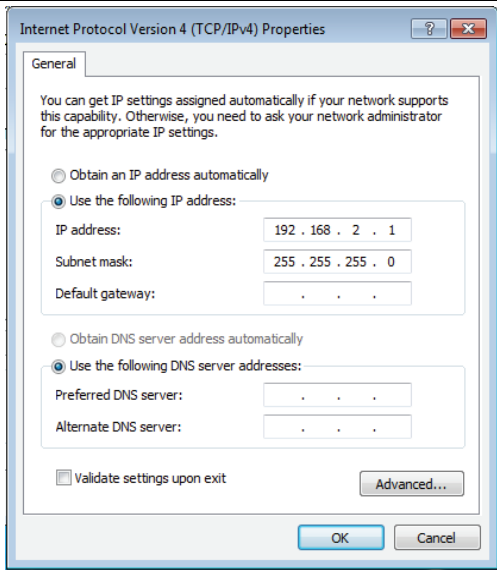


Click 'Properties'



Click 'Internet Protocol Version 4 (TCP/IPv4), and then click 'Properties'



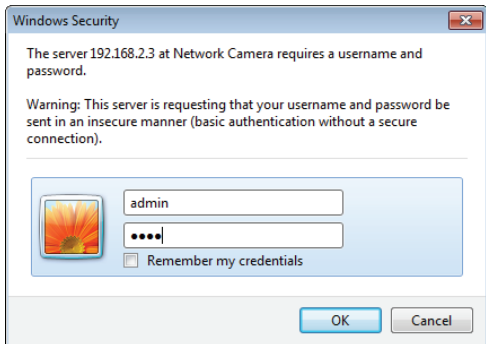


Click 'Use the following IP address', and then input '192.168.2.1' in 'IP address' and '255.255.255.0' in Subnet mask', just like shown on the left.

Click 'OK' when finish, and close all open windows you opened.



Launch Internet Explorer web browser and input '192.168.2.3' in address bar, then press enter key.



You'll be prompted to input username and password.

Input 'admin' as username, and '1234' as password, then click 'OK'.

*If you didn't see this window, please recheck all previous steps to make sure your IP camera is connected to your network.*

# Internet Camera

Please install ActiveX first. [Download ActiveX](#)

Get snapshot

Start recording

For first-time use please click 'Download ActiveX' link to download ActiveX plugin for your computer.

## File Download - Security Warning

Do you want to run or save this file?



Name: Setup\_v1.0.0.1.exe

Type: Application, 773KB

From: 192.168.2.3

Run

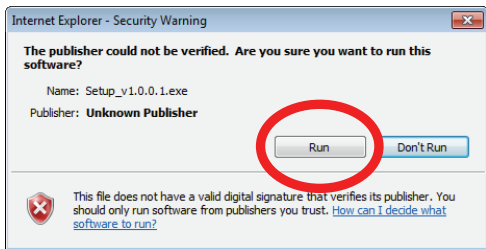
Save

Cancel

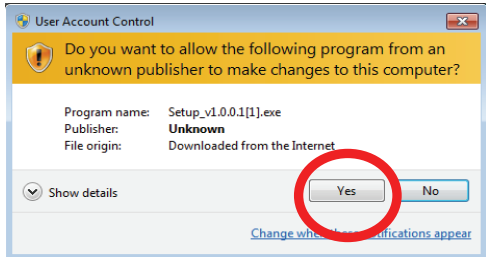


While files from the Internet can be useful, this file type can potentially harm your computer. If you do not trust the source, do not run or save this software. [What's the risk?](#)

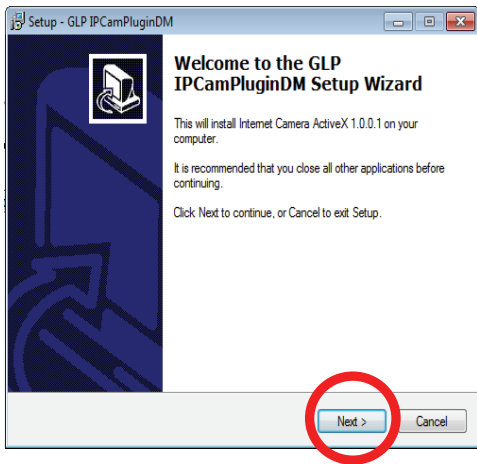
Click 'Run' when you're prompted.



Click 'Run' when you see Internet Explorer's security warning.

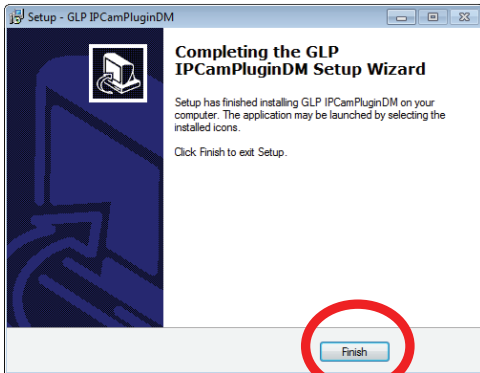


Click 'Yes' when you're prompted by Windows' user account control.

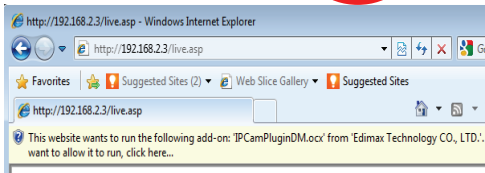


Click 'Next' to continue.

Answer 'Next' and 'Install' in all setup procedures to complete software installation.



Click 'Finish' button when you see it.



Now back to Internet Explorer web browser and press 'F5' key on your keyboard, you'll be prompted when the message like shown on the left.

Run Add-on  
Run Add-on on All Websites  
What's the Risk?  
Information Bar Help



Right-click on the message, and click 'Run Add-on'



Click 'Run' when you're prompted.  
You should be able to see the IP camera's video on your computer now. If not, please go back to previous steps and check for any possible problem, or contact your dealer of purchase for help.

